



ARISTO
PHARMACEUTICALS PRIVATE LIMITED

EXECUTIVE SUMMARY OF CSR IMPACT ASSESSMENT REPORTS



CONTENTS

Chapter 1 Introduction	01
About Aristo Pharmaceuticals Private Limited	01
About The NGO	01
Chapter 2 Research Methodology	02 - 03
Use Of Mixed Method Approach	02
Application of Qualitative Techniques	02
Application of Quantitative Techniques	02
Ensuring Triangulation	02
Standardised Framework for Evaluation	02
Objective of the Program	02
Key Stakeholders	03
Upholding Research Ethics	03
Chapter 3 Projects	04 - 27
Project 1- Support Towards Construction at Jagadguru Rambhadracharya Handicapped University	05 - 07
Project 2- Education Kit Distribution to children	08 -12
Project 3- Infrastructure Development (Public Library, Community Hall, Yatri Shade, Drainage System)	13 - 17
Project 4- Installation of Solar Streetlights	18 -20
Project 5- Water Resource Development (Handpump installation and construction of their platforms)	21 - 24
Project 6- Construction of Public Toilets in schools and public places	25 - 27
Project 7- Health Project	28 - 30

CHAPTER 1

INTRODUCTION

ABOUT ARISTO PHARMACEUTICALS PRIVATE LIMITED

Aristo Pharmaceuticals Private Limited is a leading pharmaceutical company dedicated to providing high-quality, affordable medicines across various therapeutic segments. With a strong focus on research and development, the company aims to enhance healthcare outcomes by offering innovative and accessible healthcare solutions. Aristo Pharmaceuticals operates in multiple markets, ensuring its products meet international standards and reach a broad customer base. Committed to improving public health, the company also invests in social responsibility initiatives that support community well-being and contribute to sustainable development.

ABOUT THE NGO

ABOUT ARISMA CHARITABLE TRUST

Arisma Charitable Trust serves as the dedicated CSR arm of Aristo Pharmaceuticals Private Limited, including its associated companies, Mapra Laboratories and Aristo Laboratories. Committed to creating a positive societal impact, the trust engages in community development, ethical and social practices, and sustainability. It partners with NGOs, government organisations, and domain experts to implement initiatives that promote inclusivity, equitable growth, and sustainable development. Arisma Charitable Trust's efforts are deeply rooted in a commitment to meeting fundamental human needs—such as food, shelter, health, and education—while fostering a culture of equality, liberty, and security. Through these initiatives, the trust continuously works toward the betterment of marginalised communities, reflecting its dedication to social responsibility and societal well-being.

CHAPTER 2

RESEARCH METHODOLOGY

USE OF MIXED METHOD APPROACH

The evaluation used a mixed-methods approach combining both qualitative and quantitative research. The qualitative part explored the experiences and views of key stakeholders such as community members, panchayat officials, project implementers, and investigators, providing a detailed understanding of their perspectives. At the same time, quantitative methods collected and analysed numerical data from the respondents, offering statistical insights and identifying trends. This combined approach took advantage of both methods, leading to a thorough and varied collection of data.

APPLICATION OF QUALITATIVE TECHNIQUES

Qualitative methods offer insights into the real-life experiences and perspectives of beneficiaries, stakeholders, and project implementers. The study involved detailed surveys with the beneficiaries, capturing their feedback on the usefulness and functionality of the newly installed toilets. We can closely examine the changes observed. These methods help explore how the intervention has improved hygiene and sanitation and positively impacted the community experience. By capturing the experiences and stories of those involved, qualitative approaches provide a deeper understanding of the project and its impact.

APPLICATION OF QUANTITATIVE TECHNIQUES

Quantitative techniques are used to assess the project and its impact objectively by analysing data. Surveys and questionnaires gather numerical data from beneficiaries on various indicators. We can evaluate the project's effects and improvements by comparing this data from before and after the intervention. These methods offer a measurable way to assess the project's success through statistical evidence.

ENSURING TRIANGULATION

To bolster the reliability and validity of its conclusions, the study implemented various triangulation strategies. Data triangulation was achieved by gathering information from diverse sources, including field notes, interviews with beneficiaries, interactions with panchayat officials, and feedback from the investigator.

STANDARDISED FRAMEWORK FOR EVALUATION

The research study followed international standards by using the OECD-DAC framework. This provided a reliable way to assess the project's impact, making the research findings more credible and relevant.

OBJECTIVE OF THE PROGRAM



To evaluate the Green & renewable energy (Solar Street lights), Sanitation (Toilet blocks), Water Resource Development (Handpump installation and construction of their platforms), Education kit distribution to children and Infrastructure Development, Public Library Community hall, artificial limbs provided to the especially able persons.



To evaluate the overall impact of the projects.

KEY STAKEHOLDERS



CSR Project Team



Community Members



Users Committee



Panchayat Members



Students



Health Professionals



Teachers, Principal, SMCs

UPHOLDING RESEARCH ETHICS

The impact assessment study followed strong research ethics principles throughout the process.



INFORMED CONSENT

Participants made informed decisions after fully understanding the study's purpose, risks, and benefits.



NON-MALEFICENCE

Participant well-being was safeguarded, ensuring no harm occurred from the research.



CONFIDENTIALITY

Participant information was securely protected, building a foundation of trust.



INTEGRITY

The research maintained high credibility by using honest and clear methods.



DATA SECURITY AND ANONYMITY

Strict measures ensured participant data remained private and untraceable.



JUSTICE

Everyone was treated fairly and equally, ensuring fairness throughout the research.

03.



PROJECT 01

SUPPORT TOWARDS CONSTRUCTION AT JAGADGURU RAMBHADRACHARYA HANDICAPPED UNIVERSITY

PROJECT BACKGROUND

The project at Jagadguru Rambhadracharya Handicapped University aimed to improve campus accessibility for students with mobility issues. Prior to the intervention, ramps were either broken or insufficiently placed, making it difficult for students to navigate key areas like classrooms, labs, and the library. The initiative involved constructing new ramps and upgrading existing ones to ensure that essential parts of the campus were accessible, promoting independence and inclusivity for students using wheelchairs or with other mobility challenges.

PROJECT DETAILS



Implementation year

FY 2021-2022



Assessment Year

FY 2024-2025



Implemented Partner

Arisma Charitable Trust



Total Beneficiaries

250 hostel students



Location (s)

Jagadguru Rambhadracharya
Handicapped University, Chitrakoot,
Uttar Pradesh



Spending

₹161 Lakhs



SDG Goals



PROJECT ACTIVITY



The project at the university involved constructing and installing new ramps to enhance accessibility for students, especially those with disabilities. It replaced old ramps, added new ones to previously inaccessible areas like entrances, multiple floors, and essential facilities, and ensured the ramps were easy to navigate, well-maintained, and equipped with proper signage for safe use by wheelchair users and others with mobility challenges.

Key Findings



80.0%

of the respondents regularly use the newly constructed ramps, which indicates high utilisation.



85.0%

of the respondents reported that ramps were previously only on one side of the entrance.



90.0%

of the respondents rated the newly constructed ramps as good.



90.0%

of the respondents frequently needed support from others, 40.0% were unable to climb stairs, and 15.0% often missed classes.



Attendance increased from 45.0% before the intervention to 100.0%.

Key Impacts



100%

of the respondents reported improved access to facilities, enhancing campus mobility.



100%

of the respondents feel more independent on campus after the ramp improvements.



60.0%

of the respondents noted a positive impact on their college experience due to increased inclusiveness.



60.0%

of the respondents observed heightened university awareness of disability needs post-project.

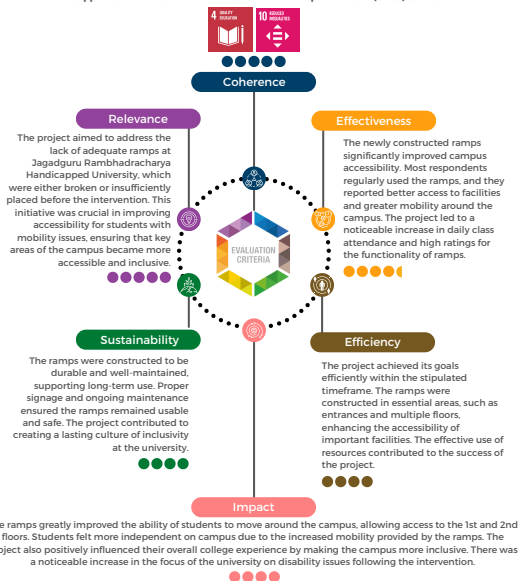


100%

of the respondents rated the overall impact of the project on their university experience as positive.

OECD FRAMEWORK

It supported the broader aims of Sustainable Development Goals (SDGs) such as



Relevance



Coherence



Effectiveness



Efficiency



Impact



Sustainability

PROJECT 02

EDUCATION PROJECT

PROJECT BACKGROUND

The project was executed by Aristo Pharmaceuticals Pvt. Ltd. through its CSR arm, Arisma Charitable Trust. Covering 10 blocks in Jehanabad, Sheikhpura, Arwal, and Nalanda districts of Bihar, the initiative reached 26 villages and benefited 44 schools. The objective was to empower school-going children by providing essential educational resources and fostering an environment that inspires their intrinsic desire to learn. Beyond academic support, the project aimed to contribute to the holistic development of students, shaping them into well-rounded individuals prepared for a bright future. As part of the implementation, school bags were distributed to students, and sports kits were provided to individual schools to support their overall growth and development.

PROJECT DETAILS



Implementation year

FY 2023-24



Assessment Year

FY 2024-25



Implemented Partner

Arisma Charitable Trust



Total Beneficiaries

34,631 individuals



Location (s)

Modanganj, Makhdumpur, Jehanabad
Sadar



Spending

₹1,44,50,713/-



SDGs



PROJECT ACTIVITY



The project carried out several activities to enhance the educational experience for students. It provided essential resources, including educational materials and sports kits, to support both academic and physical development. Smart class technology was introduced in some of the schools, making lessons more interactive and engaging for students. The project also focused on improving the learning environment by renovating classrooms, setting up computer facilities in some schools, and installing handpumps and RO systems to ensure access to clean drinking water.

Key Findings



The project was implemented in 10 blocks.



Impacted lives across 26 villages.



44
schools were targeted.



34,631
individuals were benefitted.



58.0%
of the respondents were 14-15 years old.



72.0%
of the respondents study in 9th, 10th and 11th grade.



60.0%
of the respondents are in secondary school.



All of the respondents reported receiving school bags, and 96.0% confirmed that the bags were of excellent quality.



96.0%
of the respondents stated the sufficiency of the stationery items provided for the entire academic year, and 74.0% reported their quality to be excellent.



96.0%
of the respondents stated that having the stationery items helped them stay more organised with their schoolwork.



54.0%
of the respondents reported not owning any of the sports equipment earlier.



80.0%
of the respondents regularly used the provided sports equipment, which aided in building friendships and promoting teamwork.



92.0%
of the respondents found the new seating arrangements to be very comfortable.



96.0%
of the students reported that power outages occurred rarely or never after electrification.



88.0%
of the students found the use of smart classes enhanced their understanding of the subjects significantly.



72.0%
of the respondents affirmed the usefulness of computers in completing assignments and projects.



96.0%
of the students use the handpumps/ RO systems regularly to drink water at school.



The project achieved 100% satisfaction among all respondents.

Key Impacts



100.0%

of the respondents reported an improvement in their confidence levels.



100.0%

of the respondents noted an improvement in their physical fitness.



96.0%

of the respondents observed significantly better concentration levels.



92.0%

of the respondents reported an improvement in their sitting posture.



90.0%

of the respondents reported fewer health issues after the installation of the RO system.



84.0%

of the respondents observed better academic performance due to the use of smart classrooms.

OECD FRAMEWORK



Relevance



Coherence



Effectiveness



Efficiency



Impact



Sustainability



RELEVANCE

The project aimed to meet the educational needs of students from economically disadvantaged backgrounds. It addressed barriers to accessing quality education by providing essential learning materials, introducing smart classroom technology, and upgrading infrastructure. The initiative was aligned with the priorities of the target population, ensuring that the interventions were relevant and effective.



COHERENCE

The project is in alignment with the following Sustainable Development Goals (SDGs):



The project is well aligned with national programs such as Samagra Shiksha Abhiyan and PM SHRI by addressing gaps in educational resources and infrastructure. It supported the goals of these initiatives to improve the quality of education, ensure access to learning materials, and promote digital literacy. In doing so, it enhanced the overall learning environment for underserved students.



EFFECTIVENESS

The project empowered students by providing essential resources and improving education standards. By introducing smart classroom technology and upgrading infrastructure, it created an engaging learning environment that ignited students' desire to learn. As a result, there were noticeable improvements in student engagement, academic performance, and overall learning outcomes, effectively addressing educational barriers and achieving the project's goals.



EFFICIENCY

The project was implemented on time and within budget. The distribution of educational materials and installation of smart class technology were carried out promptly, ensuring timely access for students and maximizing the impact of the initiative.

**IMPACT**

The project improved the academic performance and engagement of students from economically disadvantaged backgrounds. The interventions enhanced students' understanding of subjects, boosted their confidence, and increased attendance rates. The project's impact extended beyond academic outcomes by fostering a sense of empowerment among students and laying the foundation for improved educational standards in the community.

**SUSTAINABILITY**

The project's sustainability is ensured through the lasting impact of the smart class technology and infrastructure upgrades. While essential learning materials will require periodic replenishment, the technology and infrastructure improvements provide a long-term foundation for enhanced education. In order to ensure continued benefits, a maintenance plan for the technology and infrastructure can be established, with responsibility transitioning to local education authorities or school management.



Relevance



Coherence



Effectiveness



Efficiency



Impact



Sustainability

PROJECT 03

INFRASTRUCTURE DEVELOPMENT (PUBLIC LIBRARY, COMMUNITY HALL, YATRI SHADE, DRAINAGE SYSTEM)

PROJECT BACKGROUND

The project was executed by Aristo Pharmaceuticals Pvt Ltd. with the help of its CSR arm, Arisma Charitable Trust. It is a comprehensive initiative to develop the infrastructure in rural areas as per the community needs. It catered to the community members of Makhdumpur, Modanganj, and Jehanabad districts of Bihar.

PROJECT DETAILS



Implementation year

FY 2023-24



Assessment Year

FY 2024-25



Implemented Partner

Arisma Charitable Trust



Total Beneficiaries

Community members from
Makhdumpur, Jehanabad



Location (s)

Makhdumpur, Jehanabad, Modanganj



Spending

₹1,71,42,857/-



SDGs



PROJECT ACTIVITY



The project involved several key initiatives aimed at improving community infrastructure and services. Community halls were constructed in Govindpur and Okari, while the public library in Govindpur was renovated to serve the residents better. A new drainage system was implemented in Sakrorha village to address the long-standing waterlogging issues. A Yatri shade was built to support travellers and provide added convenience.

Key Findings

COMMUNITY HALL



73.3%

of the respondents were aware of the project before its implementation.



90.0%

of the respondents found the existing community hall to be non-functional.



80.0%

of the respondents were consulted through Gram Sabha to identify the necessary improvements for the community hall.



90.0%

of the respondents reported using the new community hall on a weekly, monthly or occasionally.



70.0%

of the respondents affirmed that they met the needs of the community and had all the required facilities.

PUBLIC LIBRARY



80.0%

of the respondents reported facing different issues with the library before the intervention, including limited seating space, leakage and dampness, inadequate washroom facility, lack of storage capacity and limited ventilation.



All of the respondents reported using the renovated library on a weekly, monthly or occasionally.

Key Impacts

COMMUNITY HALL



In addition to hosting social events, the newly constructed community hall also serves as a place for training sessions and village meetings, which enhances its utility.



80.0%

of the respondents confirmed easy accessibility of the hall to the disabled and elderly.



100.0%

of the respondents feel more connected to the community because of the hall.



86.7%

of the respondents reported that the construction of the community hall created job opportunities.



96.7%

of the respondents believed in the future usefulness of the community hall.

PUBLIC LIBRARY



70.0%

of the respondents reported that the public library is easily accessible to people with disabilities.



66.7%

of the respondents reported enhanced educational outcomes and literacy in the community after the renovation of the public library.



96.7%

of the respondents agreed that the public library will remain useful in the future.

Key Findings



96.7%

of the respondents responded that the community takes responsibility for the maintenance of the public library.

YATRI SHADE AND DRAINAGE SYSTEM



All of the respondents expressed the need for the Yatri Shade.



93.3%

of the respondents are satisfied with the overall implementation of the infrastructure projects.

Key Impacts

YATRI SHADE AND DRAINAGE SYSTEM



100.0%

of the respondents experienced travel convenience due to the Yatri shade.



56.7%

of the respondents reported using the newly constructed Yatri shade on a daily basis.



53.3%

of the respondents experienced significant improvement in cleanliness after the construction of the drainage system.



50.0%

of the respondents found the new drainage system to be very effective in preventing floods during rain.

OECD FRAMEWORK



Relevance



Coherence



Effectiveness



Efficiency



Impact



Sustainability



RELEVANCE

The project aimed to address the infrastructural gaps in the community. The absence of a proper community hall posed challenges in conducting social events and required additional expenses. The village also lacked the infrastructure to support the readers, and the absence of a dedicated study space negatively impacted their study habits. Additionally, the severe problem of waterlogging blocked roads and damaged crops. All these challenges were addressed by providing them with a proper drainage system, a community hall, and a public library.



COHERENCE

The project is in alignment with the following Sustainable Development Goals (SDGs)



The intervention is well aligned with national programs such as the Shyama Prasad Mukherji Rurban Mission, National Mission on Libraries and Swachh Bharat Mission focusing on bridging the urban-rural gap in terms of amenities and services.



EFFECTIVENESS

The project has effectively met its objectives by providing the requested infrastructure and facilities to the villages. Following the project, the ease of organising social events has increased, thus encouraging more community activities and events, hence resulting in a higher frequency of gatherings. The public library has seen high engagement, with 43.3% of respondents visiting at least once a week. The drainage system has successfully prevented waterlogging, ensuring uninterrupted road access.



EFFICIENCY

The project involved community members in its implementation to ensure efficient utilisation of resources. Certain aspects of the project experienced delays in completion, which could have been mitigated by incorporating contingency plans during the planning phase. Addressing such potential challenges upfront would enhance the efficiency and timeliness of future project executions.

**IMPACT**

The project had a significant socio-economic impact on the community. The construction of the community hall and public library has strengthened social connections and encouraged a culture of reading among residents. The drainage system has effectively reduced waterlogging, minimised the risk of flooding, and protected crops, leading to enhanced agricultural productivity. Collectively, these initiatives have enhanced quality of life, improved livelihoods, and meaningfully contributed to rural development.

**SUSTAINABILITY**

Community maintenance for most of the projects supports their long-term sustainability. To ensure the continued viability of these facilities, financial assistance can be gradually phased out, and a more sustainable plan for their operation and maintenance can be developed.



Relevance



Coherence



Effectiveness



Efficiency



Impact



Sustainability

PROJECT 04

INSTALLATION OF SOLAR STREETLIGHTS

PROJECT BACKGROUND

The Solar Street Light Installation Project, undertaken by Aristo Pharmaceuticals in collaboration with its CSR arm, Arisma Charitable Trust, successfully provided sustainable lighting solutions to over 10 blocks across Jehanabad, Sheikhpura, Nalanda, and Arwal districts of Bihar. Prior to this intervention, residents relied on temporary light sources such as mobile flashlights, torches, and lamps, which limited their mobility after dark due to concerns about theft and snake bites. The installation of solar streetlights has transformed these areas by providing reliable illumination, enabling villagers to move freely and carry out their evening activities safely and smoothly.

PROJECT DETAILS



Implementation year

FY 2023-24



Assessment Year

FY 2024-25



Implemented Partner

Arisma Charitable Trust



Total Beneficiaries

1,38,250 individuals



Location (s)

Jehanabad, Sheikhpura, Nalanda, and Arwal



Spending

₹3,40,11,921/-



SDGs

7 AFFORDABLE AND CLEAN ENERGY



10 REDUCED INEQUALITIES



11 SUSTAINABLE CITIES AND COMMUNITIES



PROJECT ACTIVITY



The project involved installing 3,300 solar streetlights in 128 villages across various locations. Additionally, it provided solar grid systems for colleges in underprivileged areas.

Key Findings



75.0%

of the respondents reported that they often encountered a lack of lighting after dark prior to the intervention.



100%

of the respondents are happy with the location of streetlights installed.



97.5%

of the respondents agree that the installation of the lights has improved their ability to carry out activities after dark.



82.5%

of the respondents know that solar streetlights are eco-friendlier than traditional lighting options.



100%

of the respondents agree that the solar streetlights have improved the safety of the children in the community.

Key Impacts



Helped illuminate over 10 blocks in Jehanabad Sheikhpura and Nalanda Arwal.



Installed solar streetlights in distinct locations in 128 villages in 2050.



97.5%

of the respondents feel their opportunities for social gatherings/interactions have improved.



95.0%

of the respondents feel they are more comfortable travelling around the community at night after the installation of the solar streetlights.



97.0%

of the respondents noticed a reduction in incidents of crime/accidents at night.

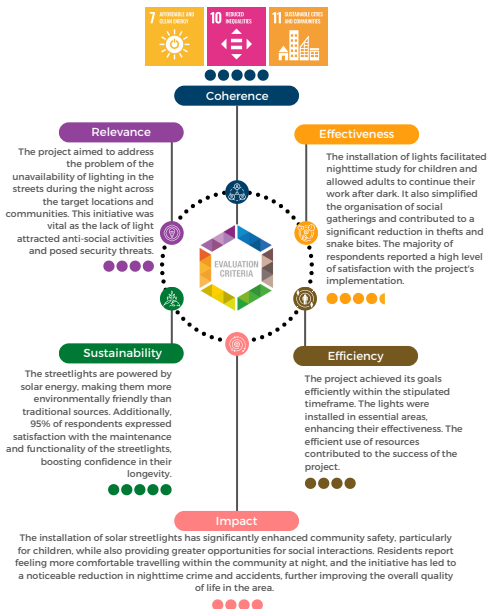


1,38,250

individuals benefited from the solar streetlights.

OECD FRAMEWORK

It supported the broader aims of Sustainable Development Goals (SDGs) such as 7,10,11.



Relevance



Coherence



Effectiveness



Efficiency



Impact



Sustainability

PROJECT 05

WATER RESOURCE DEVELOPMENT (HANDPUMP INSTALLATION AND CONSTRUCTION OF THEIR PLATFORMS)

PROJECT BACKGROUND

The project was executed by Aristo Pharmaceuticals Pvt Ltd. with the help of its CSR arm, Arisma Charitable Trust. The initiative has installed 525 hand pumps across 12 blocks in Jehanabad (Bihar). Marginalised communities in these areas have long struggled with water shortages, making a reliable water supply essential. This project has provided safe drinking water, improving the quality of life for many. Its goal is not just to provide clean water but also to ensure that everyone, regardless of their socio-economic background, has access to this basic right.

PROJECT DETAILS



Implementation year

FY 2023-24



Assessment Year

FY 2024-25



Implemented Partner

Arisma Charitable Trust



Total Beneficiaries

1,09,190 beneficiaries



Location (s)

Modanganj, Makhdumpur, Kako,
Jehanabad Sadar blocks in Jehanabad
district, Bihar



Spending

₹3,94,34,019/-



SDGs



PROJECT ACTIVITY



The project involved the construction of 525 hand pumps with platforms in strategic locations across the blocks, ensuring easy access to water for everyone. The CSR team oversees the repair and maintenance responsibilities to ensure the pumps remain functional.

Key Findings



36.0%

of the respondents belong to the age group of 18-30 years.



68.0%

of the respondents were male.



48.0%

of the respondents are farmers.



54.0%

of the respondents have 4-6 members in their family.



80.0%

of the respondents used to travel a minimum distance of 100-500 meters to fetch water before the intervention.



78.0%

of the respondents needed to fetch water multiple times a day before the intervention.



64.0%

of the respondents depended on private wells owned by others.

Key Impacts



100.0%

of the respondents reported a reduction in time for fetching water after the intervention.



16.0%

of the respondents used the time saved from fetching water for childcare and education.



96.0%

of the respondents reported a significant reduction in water scarcity.



88.0%

stated improvement in water quality after the intervention.



100.0%

of the respondents use the hand pumps daily after the intervention.



100.0%

of the respondents reported a reduction in the effort required to fetch water.

OECD FRAMEWORK



Relevance



Coherence



Effectiveness



Efficiency



Impact



Sustainability



RELEVANCE

The project aimed to solve the issue of unreliable water sources, which worsened during the summer when wells dried up due to falling water levels. This created a severe water crisis, forcing villagers to travel long distances to fetch water. These factors often led to conflicts over access. The installation of hand pumps significantly reduced these challenges.



COHERENCE

The project is in alignment with the following Sustainable Development Goals (SDGs):



The intervention is well aligned with national programs such as the Jal Jeevan Mission, focusing on improving water access and ensuring safe drinking water for rural communities.



EFFECTIVENESS

The project has effectively met its objectives by providing reliable access to clean water, reducing the long distance travelled to fetch water, and improving health outcomes. 96% of beneficiaries expressed satisfaction with the quantity of water accessed through the hand pumps. They reported a substantial reduction in water scarcity during the summer months, which was previously caused by the drying up of wells. The improved access to water near their homes allowed beneficiaries to save time that was previously spent on fetching water. Notably, 16% of respondents reported using the saved time for childcare and education, thereby enhancing their overall quality of life.



EFFICIENCY

The project ensured equitable distribution of hand pump installations across all locations and successfully achieved its objectives within the stipulated timeframe. Community members were employed for project delivery. Resources for the project were procured from the community members through open quotations, and vendors with the lowest rates were approved. This ensured efficient resource utilisation through community involvement and cost efficiency. Apart from efficient execution, the project ensured the timely resolution of the issues faced by the beneficiaries in terms of the functionality of the hand pumps.

**IMPACT**

This project has led to significant improvements in the community. Gaining easy access to adequate and safe drinking water has reduced water-borne diseases and improved health outcomes. It has also resulted in more productive time utilisation, which was previously spent travelling extra miles to access water. As a result, the reduced physical strain associated with easier water access has improved the financial situation of many families, allowing them to focus on income-generating activities.

**SUSTAINABILITY**

To ensure the long-term usability and accessibility of the project, hand pumps have been installed in public places where everyone can use them easily. If a hand pump breaks down, it is repaired within a week by the CSR team to maintain uninterrupted access. While timely maintenance by the team is necessary, transitioning to a community-driven maintenance model is recommended to foster local ownership and long-term reliability.



Relevance



Coherence



Effectiveness



Efficiency



Impact



Sustainability

PROJECT 06

CONSTRUCTION OF PUBLIC TOILETS IN SCHOOLS AND PUBLIC PLACES

PROJECT BACKGROUND

The project was executed by Aristo Pharmaceuticals Pvt Ltd. with the help of its CSR arm, Arisma Charitable Trust. It is a comprehensive initiative encompassing 21 schools and public areas across the Modanganj, Makhdumpur, and Ratnifaridpur blocks of Bihar. The objective of the project was to eradicate contamination and improve sanitation standards in the targeted schools and public areas while supporting the government in the Swachh Bharat Mission. The primary goal is to address diseases caused by poor sanitation and establish a hygienic approach to waste management. The initiative reflects a strong commitment to public health and the overall well-being of the target communities.

PROJECT DETAILS



Implementation year

FY 2023-24



Assessment Year

FY 2024-25



Implemented Partner

Arisma Charitable Trust



Total Beneficiaries

14,013 individuals



Location (s)

Modanganj, Makhdumpur, Ratnifaridpur



Spending

₹1,71,43,550/-



SDGs



PROJECT ACTIVITY



The Project focused on Constructing Toilet Blocks at 21 Targeted Schools of Jehanabad and 2 Toilet Blocks in Public areas at Kako and Govindpur Blocks of Jehanabad, ensuring they were equipped with essential sanitation facilities. Each Toilet had a water Supply through taps, electricity and functional wash basin with Proper drainage facilities.

Key Findings



90.0%

of the respondents faced long waiting times due to an insufficient number of toilets prior to the intervention.



90.0%

of the respondents reported foul smells in toilet areas, making them difficult to use.



90.0%

of the respondents experienced lower abdominal pain due to inadequate sanitation facilities.



90.0%

of the respondents could not attend school during their menstrual cycle.

Key Impacts



93.3%

of the respondents reported having functional wash basins.



65.0%

of the respondents reported having soap in the wash basins.



86.7%

of the respondents reported a decrease in unpleasant odours near their school.



80.0%

of the respondents stated they no longer need to wait in long queues to use the toilet.



21

schools have been benefited through this initiative.

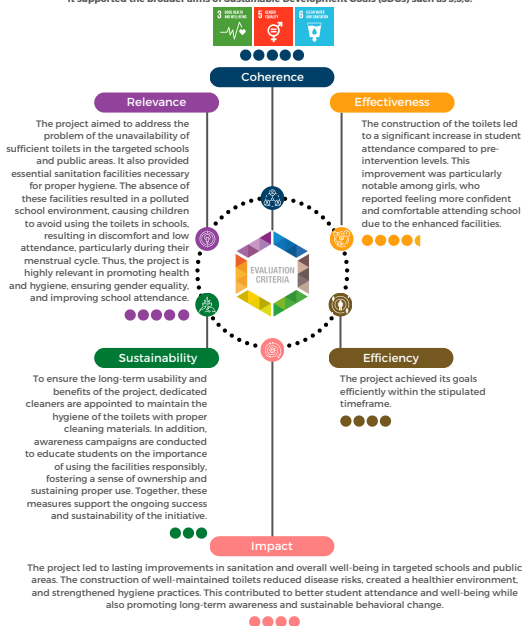


14,013

touched the lives of individuals through this project.

OECD FRAMEWORK

It supported the broader aims of Sustainable Development Goals (SDGs) such as 3, 5, 6.



Relevance



Coherence



Effectiveness



Efficiency



Impact



Sustainability

PROJECT 07

HEALTH PROJECT

PROJECT BACKGROUND

The project was executed by Aristo Pharmaceuticals Pvt Ltd. with the help of its CSR arm, Arisma Charitable Trust. In Jehanabad and nearby remote villages, high ambulance costs made emergency healthcare inaccessible for poor families. Patients faced critical delays in reaching hospitals due to the absence of affordable transportation options. To address this, Aristo Pharmaceuticals and Arisma Charitable Trust launched a subsidized ambulance service, ensuring timely medical access at a low cost. Additionally, the initiative extended its efforts to Kalpa village (Jehanabad) to support individuals with disabilities. Through this initiative, artificial leg braces were provided, helping recipients regain mobility, independence, and dignity. This project was initiated to bridge critical healthcare gaps and support vulnerable communities in these regions.

PROJECT DETAILS



Implementation year

FY 2023-24



Assessment Year

FY 2024-25



Implemented Partner

Arisma Charitable Trust



Beneficiaries

Community Members



Location (s)

Jehanabad and nearby villages



Budget

₹12,47,315/-



SDGs



PROJECT ACTIVITY



Aristo Pharmaceuticals Pvt Ltd., through its CSR arm, Arisma Charitable Trust, provided an ambulance to the Red Cross Blood Bank, which took responsibility for its maintenance and operation. The service was launched to offer affordable emergency transport in Jehanabad, with a highly subsidized fare of ₹300 per trip, easing the financial burden on low-income families. It also acted as a crucial link during private ambulance strikes. Additionally, the project donated artificial leg braces to physically disabled individuals in Kalpa village, improving their mobility and independence.

Key Findings



Patients faced critical delays in reaching hospitals due to a lack of affordable options before the intervention.



Private ambulance strikes left communities without emergency transport before the intervention.



Limited mobility options restricted disabled individuals from daily activities and social participation.

Key Impacts



Reduced the financial burden for low-income families by ₹1200–₹1700 per trip.



Provided a reliable alternative during private ambulance strikes.



Facilitated safe hospital transport for pregnant women.



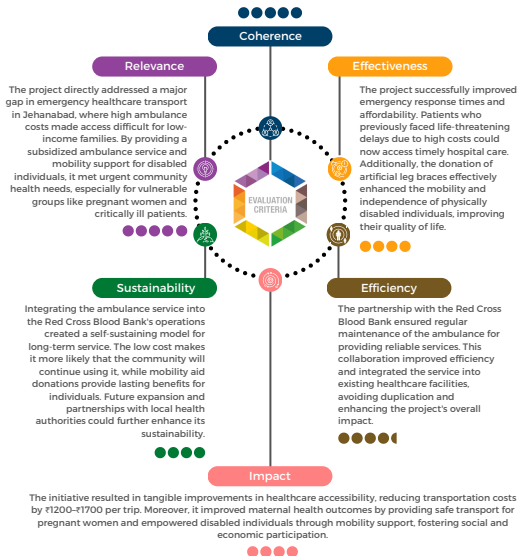
Improved mobility and independence for disabled individuals through artificial leg donations.

OECD FRAMEWORK

The project is in alignment with the following Sustainable Development Goals (SDGs)



The initiative aligned well with national healthcare priorities and complemented existing government schemes like the National Health Mission, to improve medical accessibility.



Relevance



Coherence



Effectiveness



Efficiency



Impact



Sustainability